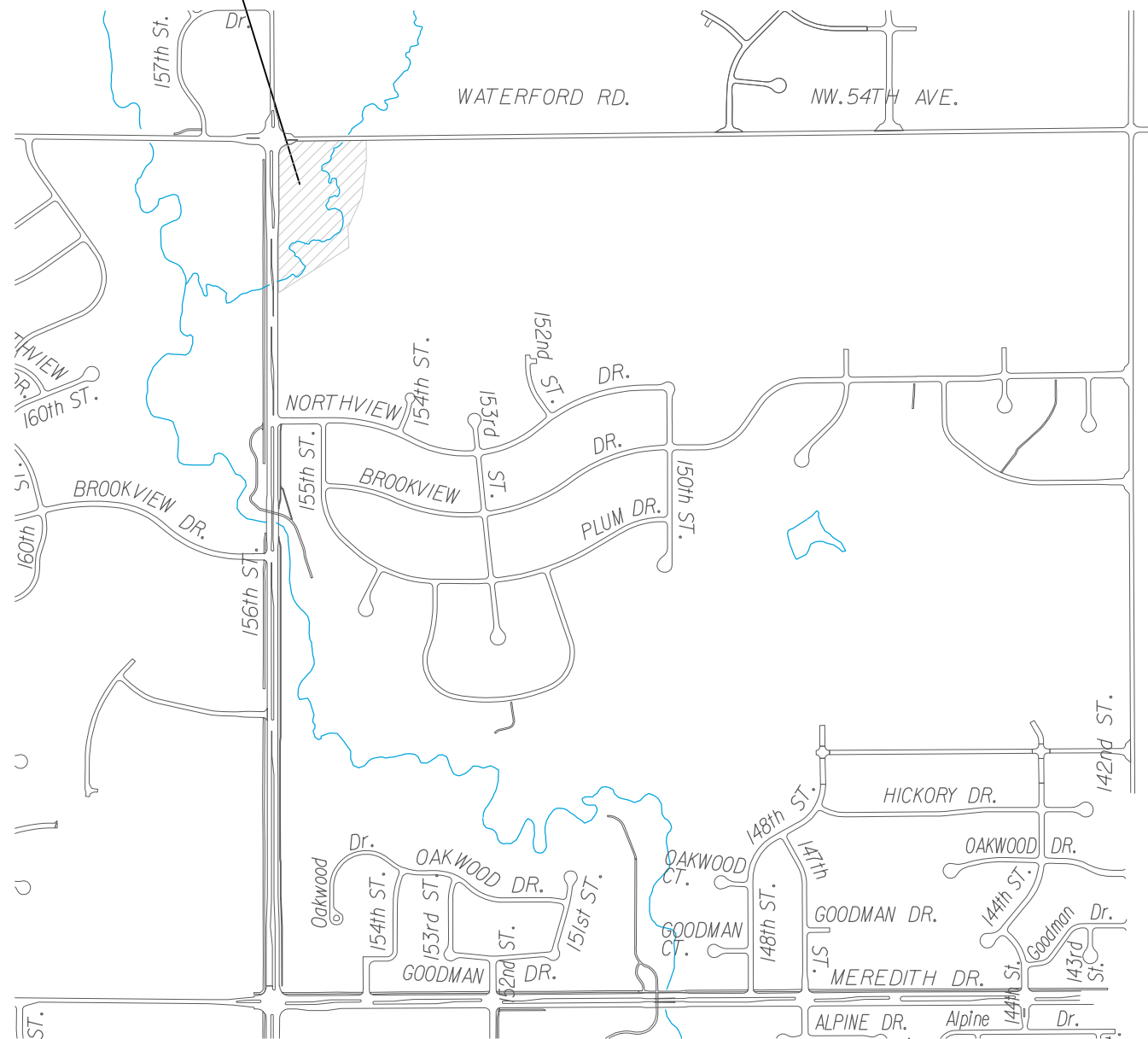




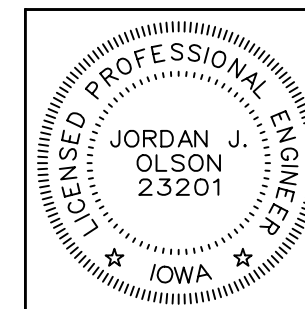
CITY OF URBANDALE
BARRETT BOESEN PARK WIFI FIBER
156TH STREET AND WATERFORD ROAD
PROJECT NO. 2023-018

INDEX OF SHEETS	
A.01	TITLE SHEET
C.01	GENERAL NOTES AND QUANTITIES
D.01	FIBER PLAN

LOCATION MAPS
 NOT TO SCALE



COMPLETE ALL WORK IN ACCORDANCE WITH THE 2023
 URBAN STANDARD SPECIFICATIONS FOR PUBLIC IMPROVEMENTS
 INCLUDING THE URBANDALE SUPPLEMENTAL SPECIFICATIONS.
 NOTIFY CITY ENGINEER 48 HOURS PRIOR TO CONSTRUCTION.



I hereby certify that this engineering document was prepared by me or under my direct personal supervision and that I am a duly licensed Professional Engineer under the laws of the State of Iowa.

Jordan J. Olson **2/24/2023**
 JORDAN J. OLSON, P.E. DATE

License Number: 23201
 My license renewal date is DECEMBER 31, 2023.

Pages or sheets covered by this seal:
 All Sheets

156TH ST.

PULL APPROXIMATELY 40 LF 6 SM FIBER, TRACER WIRE, AND PULL ROPE TO TRAFFIC CABINET. TERMINATE ALL 6 STRANDS IN TRAFFIC CABINET. REFERENCE 156TH STREET TRAFFIC SIGNALS PLANS FOR DETAILS AND LOCATION OF THIS SEGMENT OF CONDUIT AND TRAFFIC CABINET.

BARRETT BOESEN PARK
5301 156TH STREET

INSTALL TYPE II HANDHOLE. PROVIDE 50 LF OF SLACK IN NEW HANDHOLE.

APPROXIMATE LOCATION OF EXISTING WATER SERVICE. PROTECT WATER SERVICE.

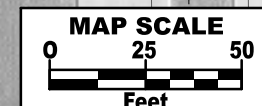
INSTALL 410 LF 1" CONDUIT. PULL 6 SM FIBER, TRACER WIRE, AND PULL ROPE TO SHELTER BUILDING.

PROVIDE 75 LF SLACK IN EXISTING HANDHOLE.

CONNECT CONDUIT TO EXISTING 1" BUILDING CONDUIT. FIELD VERIFY LOCATION.

MOUNT 19", 1-SECTION RACK ONTO INSIDE WALL OF SHELTER. INSTALL TERMINATION SHELF. TERMINATE BLUE TUBE STRANDS 1-6 OF NEW FIBER INTO TERMINATION SHELF USING SC-STYLE FUSION-SPLICED PIGTAIL CONNECTORS. PROVIDE 25 LF SLACK INSIDE BUILDING.

WATERFORD RD.



NOTES:

- 1. THE HANDHOLE AT 156TH STREET AND WATERFORD ROAD ALSO CONTAINS ICN FIBER. COORDINATE WORK WITH ICN. TAKE CARE NOT TO DAMAGE ANY CONDUIT IN THIS AREA.
- 2. 6 COUNT SM FIBER IS THE MINIMUM NEEDED FOR THIS PROJECT. IF A COUNT HIGHER THAN 6 IS MORE READILY AVAILABLE AT THE SAME OR LOWER COST, THE HIGHER COUNT FIBER MAY BE USED.
- 3. NOTIFY ICN PRIOR TO PULLING CONDUIT AND FIBER INTO EXISTING HANDHOLE.