

STAGE 1

- GENERAL STAGING NOTES:**
1. STAGE 1 INCLUDES ALL WORK EAST OF STA 489+35.
 2. MAINTAIN ACCESS TO PROPERTIES ALONG MEREDITH DRIVE BY PROVIDING TEMPORARY GRAVEL ACCESS ALONG THE ALIGNMENT OF THE BIKE TRAIL AND SIDEWALK.
 3. TRAILS AND SIDEWALK NEED TO BE ROUGH GRADED PRIOR TO SWITCHING ACCESS FROM EXISTING PAVEMENT TO GRAVEL ACCESS.
 4. PROVIDE 24' WIDE - 6" TEMPORARY HMA FROM GOODMAN DRIVE TO NW 164TH STREET DURING STAGE 1.
 5. BID ITEM FOR TEMPORARY GRANULAR SURFACING INCLUDES REMOVAL AND DISPOSAL OF GRAVEL ONCE PAVEMENT AND DRIVEWAYS ARE COMPLETE.
 6. BID ITEM FOR TEMPORARY GRANULAR ACCESS INCLUDES MAINTENANCE OF THE TEMPORARY ACCESS THROUGH THE CONSTRUCTION PERIOD. GRANULAR SURFACING WILL BE PAID FOR BY THE SQUARE YARD. ADDITIONAL GRANULAR SURFACING FOR MAINTENANCE SHALL BE CONSIDERED INCIDENTAL.

| LEGEND | |
|--------|-----------------------------|
| | FLAGGER |
| | 42" CHANNELIZER |
| | DRUM |
| | TRAFFIC SIGN |
| | DIRECTION OF TRAFFIC |
| | ARROW BOARD |
| | TYPE II BARRICADE |
| | TYPE III BARRICADE |
| | ORANGE PLASTIC SAFETY FENCE |
| | WORK AREA |

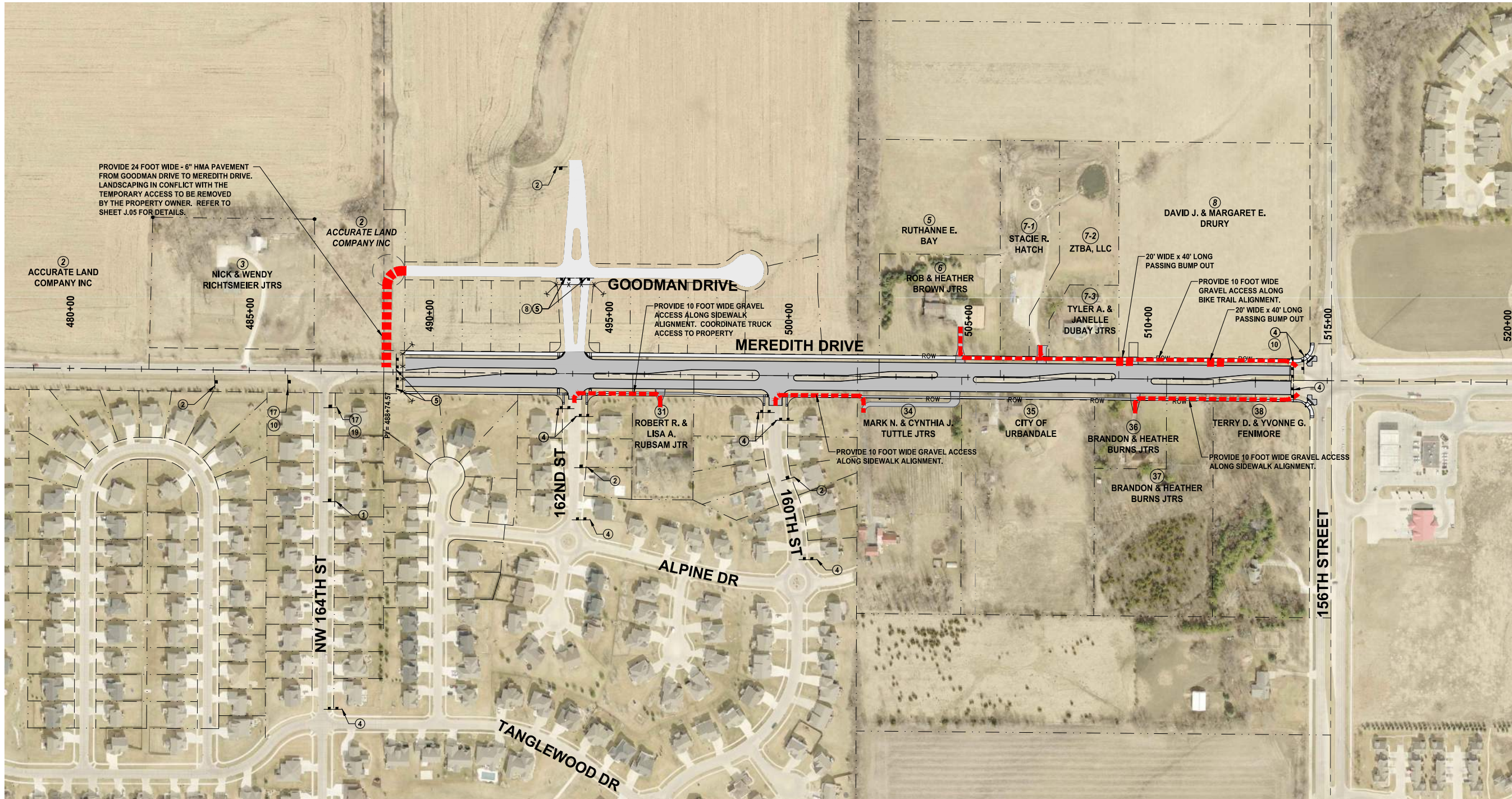


building strong communities.

1360 NW 121st Street, Suite A
Clive, Iowa 50325
515-964-1229
fax 515-964-2370

NOTICE:
McClure Engineering Company waives any and all responsibility and liability for problems which arise from failure to follow these Plans, Specifications, and the engineering intent they convey, or for problems which arise from failure to obtain and/or follow the engineers guidance with respect to any errors, omissions, inconsistencies, ambiguities, or conflicts which are alleged.

COPYRIGHT:
Copyright and property rights in these documents are expressly reserved by McClure Engineering Company. No reproductions, changes, or copies in any manner shall be made without obtaining prior written consent from McClure Engineering Company.



TRAFFIC CONTROL PLAN



NORTH



MEREDITH DRIVE
156TH STREET TO
170TH STREET
CITY PROJ NO. 2018-003
URBANDALE
URB 20615018
January 2019

REVISIONS
PRELIMINARY SUBMITTAL - 10/31/16
RIGHT OF WAY SUBMITTAL - 6/30/17
CHECK PLANS - 12/14/18
ISSUED FOR LETTING - 1/16/19

| | |
|-------------------|-----------------------------|
| ENGINEER SCS | DRAWN BY SCS |
| CHECKED BY TMS | FIELD BOOK NO. FIELDBOOK |

DRAWING NO. J.03 SHEET NO. 41 / 119